



LAND OF THE ICE BEARS

AN IN-DEPTH EXPLORATION OF ARCTIC SVALBARD

10 DAYS/9 NIGHTS | MAY 30 - JUNE 8, 2024



ABOARD NATIONAL GEOGRAPHIC RESOLUTION



DEAR DU ALUMNI, FAMILY AND FRIENDS,

The Arctic is all about radical simplicity—elemental rock sculpted by millennial forces, the carpeting tundra, the impassive massiveness of tidewater glaciers, and lordly bears stalking the lace-like vastness of the pack ice. Timeless and essential, wild and beautiful, the Arctic is mythic—providing the thrill of pure discovery in pure wildness.

Our voyage aboard the 76-cabin *National Geographic Resolution* delivers the best of the Arctic—featuring the “capital” of Arctic nature: Svalbard. Svalbard is one of the few places on Earth where the polar bear can be reliably found in its natural environment. Spotting a polar bear in the wild, a life-list must for many, is a chance to experience the Arctic on a visceral level.

With years of Arctic exploration, the ship's ace spotters have honed their skills; they know how to find *isbjorn*, the ice bear, and the captain knows how to approach the animals—respectfully—for optimal sightings. They have learned their behavior, understand how they tend to move in the pack ice and, consequently, know where to find them—to deliver the thrill for you.

Clearly, finding and observing polar bears in their wild habitat is the pinnacle experience of exploring the Arctic, but this voyage offers so many other utterly fascinating things—a waterfall gushing from a great glacier terminus, throngs of seabirds, blankets of wildflowers, iconic reindeer and walruses, and the chance of spotting several species of whales.

You'll travel there in safety and comfort aboard an ice-strengthened expedition ship, along with the best ice team in the world. With a range of innovative tools for exploring, including a fleet of Zodiacs and kayaks, *National Geographic Resolution* is the perfect mobile platform for discovering all the fascinating aspects of the Arctic. An onboard team of expert naturalists, undersea specialist, world-class photographer, and a certified photo instructor all help you explore and capture every facet of your journey.

Join us May 30 - June 8, 2024, and experience the joy of observing a beautiful animal secure in its native habitat and the elegiac ache at the prospect of what looms. **To make your reservation, please return the enclosed reservation form or call 833-985-1261.**

Sincerely,



Sarah Doody
Pioneer Journeys
Travel Program Coordinator

NOTE: On this voyage, your bar tab and tips to the crew will be included. Plus, receive a complimentary Arctic parka.

Cover photo: Polar bear leaping from a little ice island, Svalbard.

Left: Guests in a Zodiac approach near a glacier in Spitsbergen. © Michael S. Nolan

Ship's Registry: Bahamas



THE ARCTIC: NATURE IN ITS PUREST FORM

A mere 600 miles from the North Pole, located in Norway's High Arctic, Svalbard is true wilderness, a pristine blue-white land of towering glaciers, lapidary fjords, teeming bird colonies, huddles of walrus hauled out on pebbled beaches, and reindeer grazing on tundra ablaze with wildflowers.

We explore the Svalbard archipelago to observe one of the most majestic sights on Earth: a polar bear, in its element, ranging over the pack ice, hunting for seals. The ace spotters will do whatever it takes—from manning the spotting scopes round the clock to disturbing your sleep with a gentle “bear alert”—to make sure you don’t miss the thrill of seeing a lone male, or a mother with cubs, gaze up at you with curiosity and no fear at all. They will also skillfully guide your gaze to the walruses, reindeer, Arctic foxes, whales, gyrfalcons, and 60 species of birds that fill the sea, sky, and land with exuberant life in our splendid season in the Arctic.



Clockwise: Polar bear and cubs on the pack ice; Atlantic walrus hauled out on ice floe; glacier terminus, Svalbard; bearded seal; a reindeer lopes along the tundra.



THE PERFECT PLATFORM FOR EXPLORING

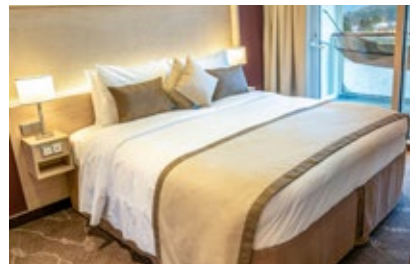


National Geographic Resolution is the only expedition ship designed and equipped by individuals with a collective 175 years of expedition experience. Through the ship's agility and the skill of her captain, you can experience unprecedented encounters with beauty,

wildness, and serenity in the Arctic. *National Geographic Resolution* is the best-equipped expedition ship in the world, featuring exceptional accoutrements that make her an excellent base for exploration. A fleet of MK-5 Zodiacs, the finest expedition landing craft available, and 36 stable sea kayaks allow for up-close discovery, while state-of-the-art undersea video technology offers a unique opportunity to see beneath the ocean's surface while staying dry.

THE PRIVILEGE OF COMFORT & COMMUNITY

National Geographic Resolution provides a welcoming home in the remote Arctic. She is a beautiful ship, built with careful attention to details and comfort. Her 76 cabins, including many with balconies, are well-appointed and relaxing, while her public spaces, with their expansive windows, maintain a dialogue with the sea and the scenery.



And she fosters an intimate, learning-oriented expedition environment. This is not the passive state of cruising; this is active engagement with the environment and its creatures, seeing and then turning to companion experts for answers to questions or a sense of context—especially valuable in the High Arctic, which plays such a vital role in the climate change discussion.

Opposite (clockwise from top): Guests take in the magnificent scenery from their Upper Deck suite balcony; kayaks allow for water-level explorations; Zodiac cruise offers eye-level view of glacier; National Geographic Resolution can safely navigate polar passages; igloo and hot tub onboard.



TRAVEL WITH AN A+ EXPEDITION TEAM

Your expedition leader is an outstanding individual who guides and motivates the team of naturalists, such as marine biologists, geologists, ornithologists, botanists, and undersea specialists, who accompany your voyage. They help you spot polar bears in the vast whiteness of the Arctic pack ice to deliver insightful observations and experience the thrill of genuine discovery. Their commitment and passion engage you, and their extensive knowledge and experience illuminate the facets of all you see and do during your expedition. In addition, a wellness specialist helps you benefit from the tonic of wellness.



Naturalist Dennis Cornejo has worked with Lindblad Expeditions since 1981 and has explored the world's remote corners by foot, by sea, and undersea as a diving professional.

PHOTOGRAPH WITH TOP PROS



Whether you think of yourself as a photographer or simply want to capture the moments at the heart of your voyage, you'll take your best photos ever on this voyage. A world-class photographer is on board to provide inspiration and advice gleaned over the course of a significant career. Plus, a certified photo instructor is at your service to help you understand your camera and its settings, the basics of composition, and how to capture the scenery and wildlife along your journey. And regardless of your skill level, you'll return home a more confident photographer with fantastic photos.

Dive into the onboard OM System Gear Locker to field-test new lenses, camera bodies, and more—free. Plus, ask about pre-voyage discounts and benefits.



Opposite (clockwise from top): Guests observing the landscape from the ship; kayaking along Svalbard's pristine coast; naturalists point out wildlife during Zodiac outings; undersea specialist lowers ROV to capture undersea images for playback in the lounge.

LAND OF THE ICE BEARS: AN IN-DEPTH EXPLORATION OF ARCTIC SVALBARD

10 DAYS/9 NIGHTS—ABOARD *NATIONAL GEOGRAPHIC RESOLUTION*



Zodiacs provide the flexibility to land almost anywhere.

A high Arctic archipelago situated between Norway and the North Pole, Svalbard is a place of deep fjords, snowcapped mountains, massive sheets of ice, and magnificent polar bears. Travel under the midnight sun aboard *National Geographic Resolution* and experience nature in its purest form.

DAY 1: OSLO, NORWAY

Arrive in Oslo and check into the Thon Hotel Bristol. Explore this charming city and stroll among the famed Vigeland sculptures—hundreds of life-size human figures set in terraced Frogner Park. Visit the Fram Museum, dedicated to the wooden ship sailed by Norwegian explorers Nansen and Amundsen. This evening, join your fellow travelers for a welcome cocktail reception, followed by dinner. (L,D)

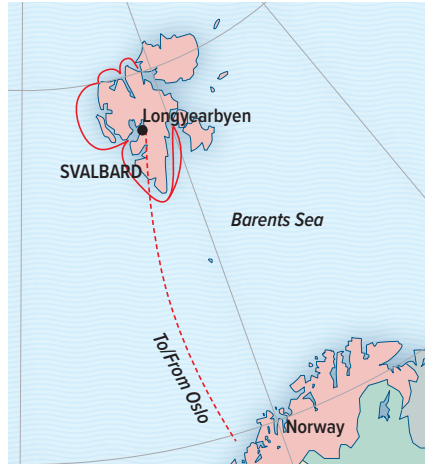
DAY 2: OSLO/LONGYEARBYEN/EMBARK

Depart Oslo on a charter flight and enjoy breathtaking vistas en route to Longyearbyen. On arrival, visit the Svalbard Museum to learn about the history of Svalbard, from 17th-century whaling to modern mining, research, and tourism. Embark *National Geographic Resolution*, your base for the next six days. (B,L,D)



DAYS 3-8: EXPLORING SVALBARD

This voyage is undertaken in the spirit of discovery, and our travel in the archipelago is exploratory by design. In a region ruled not by humans but by polar bears, we let nature guide our course. Svalbard lies north of the Arctic Circle, where the summer midnight sun never sets. With a fully stabilized ice-class expedition ship, we are able to probe the ice in search of wildlife. Our exact day-to-day itinerary remains flexible, depending on local ice and weather conditions. Zodiacs and kayaks take us close to experience the region's geologic features and the wildlife that flourishes during the summer months. With a world-class photographer and a seasoned naturalist staff, venture to the foot of vast tidewater glaciers, kayak among sparkling icebergs, and explore fjords that split the coastline. Hike through miniature gardens blooming on the tundra, and search the edge of the pack ice for polar bears, walruses, seals, reindeer, and Arctic foxes. Svalbard is one of the few places on the planet to observe majestic polar bears in their natural habitat. (B,L,D)



DAY 9: LONGYEARBYEN/DISEMBARK/OSLO

Disembark in Longyearbyen and take a short bus ride to Camp Barentz in the nearby Advent Valley for a taste of Arctic culture. Here, you'll discover a unique collection of buildings including an authentic *gamme*, a traditional round building with an open fire in the center, and a *lavvo*, the traditional tent of the Sami people. Enjoy refreshments and meet some of the friendly sled dogs that reside at camp. Fly back to Oslo and overnight at the SAS Radisson Blu Airport Hotel. (B,L)

DAY 10: OSLO/U.S.

After breakfast, proceed to the airport for flights home. (B)

OPTIONAL EXTENSION:

NORWAY'S FJORDS: Pre-voyage, 5 days.



Polar bear in Arctic Svalbard.



NATIONAL GEOGRAPHIC RESOLUTION

CAPACITY: 138 guests in 76 outside cabins.
REGISTRY: Bahamas. **OVERALL LENGTH:** 406 feet.

National Geographic Resolution is a next-generation expedition ship, purpose-built for polar navigation. Fully stabilized, highly strengthened, ice-class Polar Code PC5 (Category A) vessel, designed to navigate polar passages year-round, and safely explore uncharted waters, while providing exceptional comfort. The patented X-bow® is key to its design; its powerful wave-slicing action provides an extremely smooth ride even in adverse conditions, and even reduces spray on deck for superior observation. It carries a full suite of expedition tools and offers a variety of experience enhancing amenities.

PUBLIC AREAS: Two restaurants, a chef's table for small group dining, observation lounge with bar, gym, wellness area, infinity-style outdoor hot tubs, library, main lounge with full service bar, 24-hour beverage, state-of-the-art facilities for films, slideshows and presentations, and a photo workshop area; plus, an expedition base with lockers for expedition gear, and an open Bridge for access to our captain, officers and the art of navigation.

MEALS: Two restaurants, featuring local, sustainable choices and unassigned seating for flexible, inclusive dining; plus a Chef's table for intimate, small group dining. Main restaurant has 270° views, and the Observation deck restaurant features lighter, made-to-order fare.

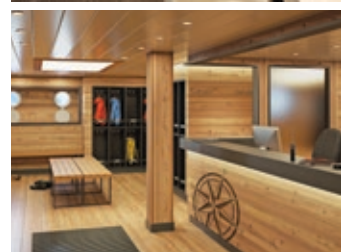
CABINS: All cabins face outside with large windows, private bathroom, and climate controls. Cabins are equipped with expedition command centers with iPad tablets, multiple electrical and USB outlets, TVs with on demand entertainment, phone, Wi-Fi, clock, barometers, hygrometers, vanity mirror, mini refrigerator, small safe, ice bucket, glasses, hair dryer, reading lights, and an atlas. Luxury linens and pillows. Bathrooms are outfitted with Rain showers and hand-held shower, botanically inspired shampoo, conditioner, shower gel and lotion. Complimentary insulated water bottles. Balcony cabins have hammocks, chairs, and a table.

EXPEDITION TOOLS: Zodiac landing craft, kayaks, snowshoes, cross-country skis, undersea specialist operating a Remotely Operated Vehicle (ROV) and underwater video camera for unique access to polar marine world, hydrophone, aerial remote-controlled camera and video microscope, and OM System Photo Gear Locker.

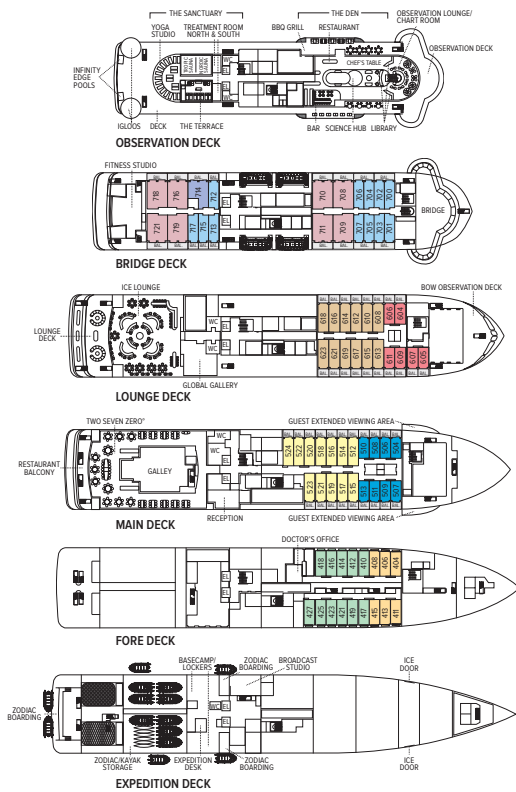
SPECIAL FEATURES: A full-time doctor, undersea specialist, world-class photographer, certified photo instructor, an internet cafe, and laundry.

WELLNESS: The vessel is staffed by our wellness specialists and features a glass-enclosed yoga studio, gym, treatment rooms and spa relax area, and high- and low-heat saunas with ocean views.

SUSTAINABILITY: Lindblad Expeditions takes responsible, sustainable travel to heart. For over 50 years, our expeditions have inspired travelers to protect the ocean, conserve wildlife, bolster local communities, and enable meaningful scientific research. We are 100% carbon neutral and dedicated to green business practices at every level of our operations. When you travel with us, you'll eat sustainable meals, experience our commitment to single-use plastic-free travel, and be aboard the industry's first self-disinfecting expedition ships, prioritizing your health and safety. Feel good about exploring with us and preserve the planet for future generations.



From top: The Ice Lounge is the expedition community hub for recap, presentations and sociability; standard cabin; suite with balcony; artist rendering of expedition Base Camp with lockers for gear.



COSTS ARE PER PERSON, DOUBLE OCCUPANCY UNLESS INDICATED AS SOLO.

CATEGORY 1:	\$13,730
Fore Deck with two large windows, alcove seating, relax chair #404, 406, 408, 411, 413, 415	
CATEGORY 2:	\$14,190
Fore Deck with two large windows, alcove seating, relax chair #410, 412, 414, 416-419, 421-427	
CATEGORY 3:	\$17,250
Main Deck—Suite with balcony and sofa #512, 514-524	
CATEGORY 4:	\$19,100
Lounge Deck—Suite with balcony and sofa #608, 610, 612, 613-623	
CATEGORY 5:	\$21,030
Bridge Deck—Suite with balcony and sofa #700-707, 712, 713, 715, 717	
CATEGORY 6:	\$24,360
Bridge Deck—Suite with large balcony, sofa bed #714	
CATEGORY 7:	\$27,050
Bridge Deck—Junior Suites with large balcony, sofa bed, bathtub, walk-in closet #708-711, 716, 718, 719, 721	
CATEGORY A SOLO:	\$21,510
Main Deck—Suite with balcony #504, 506-511, 513	
CATEGORY B SOLO:	\$23,840
Lounge Deck—Suite with balcony #604-607, 609, 611	

All cabins have: Ability to set up as queen or two singles (except solo cabins, which are set up as one single), command center with docking for multiple devices, atlas, clock, barometer, TV, phone, digital tablet for onboard info, hair dryer, safe, refrigerator.

INCLUSIVE PRICING

- ✓ All meals as indicated in the itinerary, both aboard and onshore. Meals are inspired by regional cuisine and locally sourced where possible.
- ✓ Beer, wine, cocktails, and spirits. We are also pleased to offer a selection of super-premium wines and liquors, available for purchase.
- ✓ 24-hour access to snacks, premium coffees and teas, non-alcoholic beverages, and filtered water
- ✓ Hors d'oeuvres inspired by regional cuisine and locally sourced where possible
- ✓ Sauna & Fitness Center, Yoga Studio
- ✓ 24-hour access to lounges, observation decks, library stocked with regionally relevant literature, and other shared spaces
- ✓ The guidance and company of our expedition staff
- ✓ Presentations on your destination by expedition staff and expert guest speakers
- ✓ Gratuities to ship's crew
- ✓ Assistance by the onboard photography experts
- ✓ Access to the OM System Photo Gear Locker with the latest gear to try out on loan
- ✓ Mac computer kiosks for downloading your photos
- ✓ Excursions, hotels, and airport transfers, as indicated in the itinerary
- ✓ Complimentary parka and reusable water bottle to fill at onboard water refill stations
- ✓ Park and site entrance fees, special access permits, and port taxes
- ✓ Selection of exploration tools curated to your destination, such as Zodiacs, kayaks, and other state-of-the-art gear

SPECIAL OFFER

MILESTONE CELEBRATION PACKAGE: Celebrate birthdays, anniversaries, family reunions, etc., with your group of eight or more, and receive 5% off, a \$150 shipboard credit for the spa or champagne, a complimentary group photo, and more. Milestone celebration must be communicated at time of booking. Milestone amenity package is one per group, intended for the guest celebrating the Milestone event. Group discount is applicable to cruise portion only, and does not apply towards additional services such as hotels, extensions, airfare, etc. Group cancellation terms also apply. Not combinable with certain offers.

BRING THE KIDS: We believe sharing an expedition with your kids or grandkids is a life-enhancing experience. Take \$500 off the double occupancy price for each person under 18.

TERMS AND CONDITIONS

EXPEDITION COST INCLUDES: All accommodations aboard ship or in hotels per itinerary; all meals as indicated in the itinerary, both aboard and onshore; beer, wine, cocktails, and spirits aboard the ship (except certain super premium brands which are available for purchase); hors d'oeuvres, 24-hour access to snacks, premium coffees and teas, non-alcoholic beverages, and filtered water; excursions and airport transfers to and from recommended flights, as indicated in the itinerary; crew gratuities; exploration tools curated to destination, such as Zodiacs, kayaks, guidance and company of our leading expedition staff; assistance by the Photography Expert and certified photo instructor; access to the OM System Photo Gear Locker; presentations by expedition staff and expert guest speakers; complimentary parka or jacket, complimentary reusable water bottle; services of a physician, physician's assistant, nurse practitioner, or paramedic; morning stretch classes and 24-hour access to exercise equipment; 24-hour access to lounges, observation decks, library, and other shared spaces; park and site entrance fees, special access permits, and port taxes. Unused services or items included in our programs are non-refundable.

NOT INCLUDED: Airfare (except flights when indicated as included); pre- and post-expedition extensions; additional hotel nights (except when indicated as included); private transfers; laundry, spa treatments, Wi-Fi, and phone services (except when indicated as included); travel protection plans; and passport, visa, and immigration fees.

SAMPLE AIRFARES: Round-trip Newark/Oslo: Economy from \$1,180; Business from \$3,960. Charter airfare (round-trip Oslo/Longyearbyen): \$1,140 per person. Charter flight must be ticketed by Lindblad Expeditions. Lindblad will assist in making your international air arrangements for a \$50 per person service fee. Fares subject to change.

RESERVATIONS: To confirm your place, an advance payment of 15% of the cabin fare, per person is payable by check, Visa, MasterCard, American Express, or Discover.

FINAL PAYMENT: Due 120 days prior to departure. Lindblad Expeditions reserves the right to cancel your reservation if payment has not been received by final payment due date.

TRAVEL PROTECTION PLAN: Travel protection and medical insurance are strongly recommended and are available at extra cost.

ENTRY AND VISA REQUIREMENTS: Guests are advised to verify travel documents (passport/transit visa/entry visa) for the country(s) through which they are transiting and/or entering. Reliable and most current information regarding international travel can be found by contacting the consulate/embassy of the country(s) you are visiting or transiting through. We will not be responsible if you are denied entry or transit into a country if you are unable to provide valid documents as per the country's requirement.

SMOKING AND VAPING POLICY: Allowed only in designated outdoor areas.

RESPONSIBILITY AND OTHER TERMS & CONDITIONS: Certain other provisions concerning, among other things, limitations of Lindblad Expeditions' and National Geographic Expeditions' (a division of National Geographic Partners, LLC) liability for loss of property, injury, illness, or death during the voyage will be provided to all guests on the ship's ticket sent prior to departure or upon request. By registering for a trip the guest agrees to all such terms and conditions.

NOTE: Itineraries and prices listed in this brochure are as of publication date and are subject to change. Under normal conditions the total expedition price is guaranteed at the time of booking. However, the expedition pricing is determined far in advance of initial departure on the basis of then-existing projections of fuel and other costs. In the event of increases in those costs, including increases in the price of fuel, currency fluctuations, increases in government taxes or levies, or increased security costs, the right is reserved to adjust the price of your expedition or add a surcharge to cover such unexpected increases. We will always provide an explanation of the reason for increase in costs.

Photo Credits: Sisse Brimberg & Cotton Coulson, David Cothran, Ralph Lee Hopkins, Michael Luppino, Michael Melford, Michael S. Nolan, Marco Ricca, Shutterstock.

CANCELLATION POLICY

Number of Days Prior to Expedition Start	Per Person Cancellation Fee
120 or more days	No penalty. Advance Payment will be credited toward your next expedition**
119-90 days	50% of trip cost***
89-0 days	100% of trip cost***

**Advance payments will be credited in the form of a Lindblad Expeditions Travel Certificate, valid for 12 months from the date of cancellation, and which may only be applied towards final payment on any future booking.

***Trip cost is total price paid including extensions, charter airfare and other additional services.

We strongly recommend that you purchase a travel protection plan.



Please send reservation to:
 Lindblad Expeditions
 96 Morton Street
 New York, NY 10014
 Ph: (833) 985-1261
 Fax: (646) 390-2050
 Email: groups@expeditions.com

RESERVATION FORM: LAND OF THE ICE BEARS

ABOARD NATIONAL GEOGRAPHIC RESOLUTION | MAY 30 - JUNE 8, 2024

Please reserve _____ place(s).

Guest 1: _____ DOB: _____
(As it appears on passport)

Guest 2: _____ DOB: _____
(As it appears on passport)

Street Address: _____

City: _____ State: _____ Zip: _____

Home Phone: _____ Cell Phone: _____

Business Phone: _____ Fax: _____

Email: _____

Accommodations: Double Single Twin share with a friend

Share with roommate assigned by tour operator

Please indicate choice of cabin category in order of preference:

1st choice: _____ 2nd choice: _____

Please send information on the extension to **Norway's Fjords**

Advance Payment Information: 15% of the cabin fare, per person.

If paying by check, please make payable to: **Lindblad Maritime Enterprises, Ltd.**

Enclosed is my advance payment of \$ _____

If paying by credit card, we will contact you to finalize your booking and collect payment information.

I have read the Terms and Conditions for the program and agree to them:

Signature: _____ Date: _____


LAND OF THE ICE BEARS

EXPEDITION HIGHLIGHTS

- » See the very symbol of the Arctic—the polar bear—in its natural habitat, on the sea ice.
- » Take naturalist-led walks and cruise among beautiful icebergs in a Zodiac or a kayak.
- » Experience the legendary midnight sun: the ethereal light of the northern summer.
- » Watch for walruses, bearded and ringed seals, arctic foxes, and reindeer.
- » Enjoy superlative photo ops and onboard photo assistance.

100% CARBON NEUTRAL AND COMMITTED TO BEING SINGLE-USE PLASTIC FREE

We have chosen Lindblad Expeditions because they care deeply about the planet and see travel as a powerful force for good.

 Printed on 10% recycled content paper with soy-based inks. We recommend that you pass this along for others to enjoy or recycle.



University of Denver Alumni Engagement
Burwell Center for Career Achievement
2190 East Asbury Avenue
Denver, CO 80208

PRSR STD
U.S. POSTAGE
PAID
LINDBLAD
EXPEDITIONS

GRP-UDEN-BEAR24